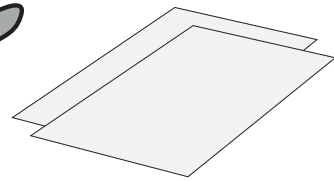


# Make your own pop-up safari scene

## YOU WILL NEED



2 x A4 paper



Scissors



Pencil



Colouring pencils



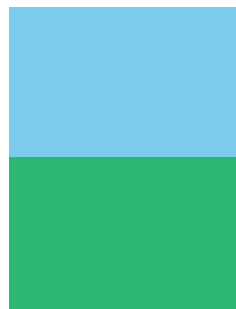
Tape (double-sided tape if available)

Ask an adult to help with scissors

Inspired by our Lonely Planet Kids pop-up books, we've created a pop-up safari scene! Bring these awesome animals to life at home and make your very own pop-up craft by following these simple steps below.

## STEP 1

Either print or colour in a sheet of A4 paper, making the top half blue for the safari sky, and the bottom half green for the lush grasslands.



## STEP 2

Fold your paper in half widthways. Then begin to make your pop-up flaps by drawing six horizontal lines with your pencil outwards from the folded edge, as shown here. We've made ours different lengths and thicknesses to match with the different animals' shapes and sizes.



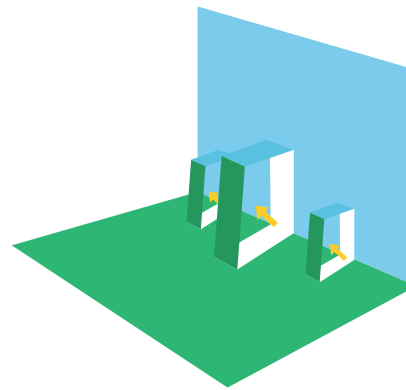
## STEP 3

With an adult's help, carefully cut along the pencil lines to create the pop-up flaps.



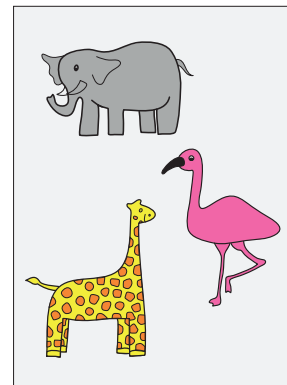
## STEP 5

Push the pop-up flaps up as shown. Press them slightly so that they stand upright steadily.



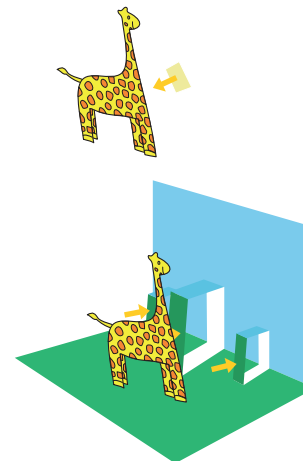
## STEP 7

Next, colour your animals in! We've used yellow and orange for the giraffe, grey for the elephant and pink for the flamingo.



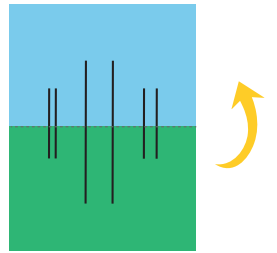
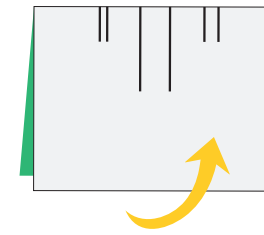
## STEP 9

Using double-sided tape, (or by folding pieces of normal tape so that it acts like double-sided tape), stick your animals onto the front of the pop-up flaps.



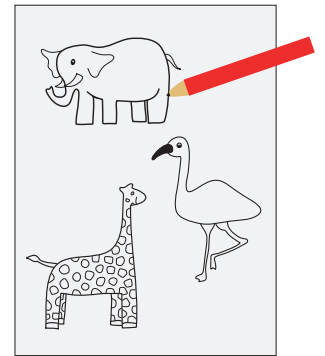
## STEP 4

Open your paper up to full length, as shown here.



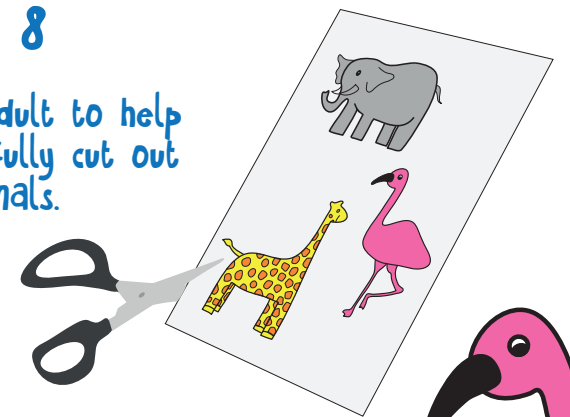
## STEP 6

On another sheet of paper, draw your animals! We've chosen a giraffe, an elephant and a flamingo for our safari scene.



## STEP 8

Ask an adult to help you carefully cut out your animals.



## STEP 10

Finally, add some detail to your safari. We've coloured in and cut out a tree and a watering hole. Display your 3D pop-up safari scene on a surface to stand proud from all angles!

