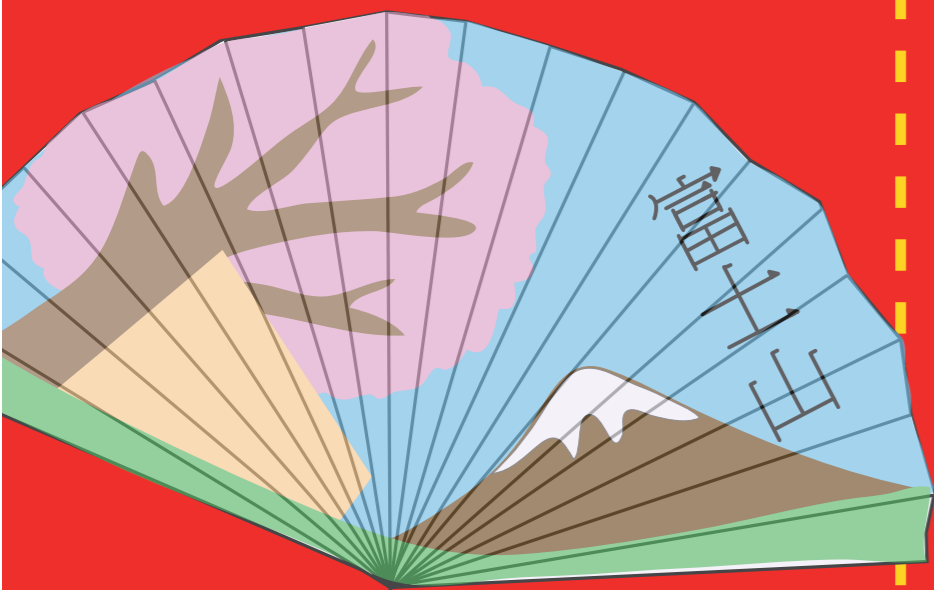


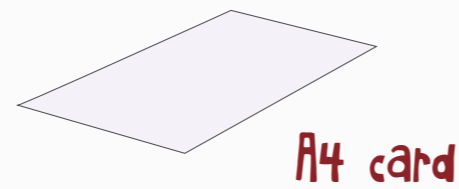
Jidai Matsuri

Make your own Japanese fan

The festival Jidai Matsuri takes place every year on October 22nd in the historical city of Kyoto in Japan. The main event is a parade that begins at the Imperial Palace. It features period costumes from Japanese eras dating all the way back to the year 794! People dress in outfits such as military uniforms and kimonos, plus all the accessories that come with traditional dress, such as Japanese fans. Follow these simple steps to make your own elegant fan with a painted Japanese scene!



YOU WILL NEED



Paint



Pencil

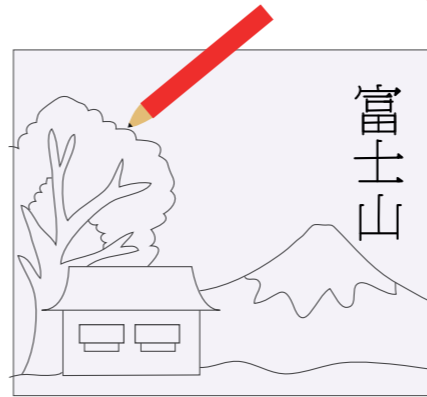


PVA glue



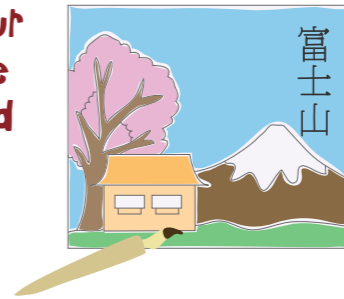
STEP 1

Draw your Japanese scene and symbols with pencil. We've used symbols for 'Mount Fuji' in our example. Ask an adult to help you look online for different symbols to choose from.



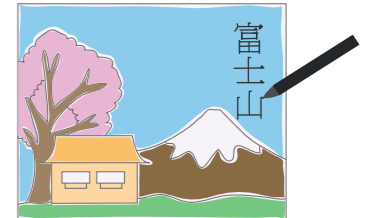
STEP 2

Paint your Japanese scene and leave to dry.



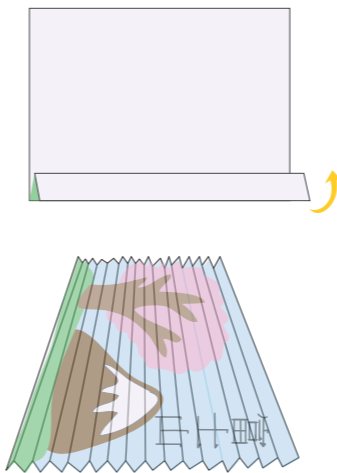
STEP 3

Go over the Japanese symbols with marker pen.



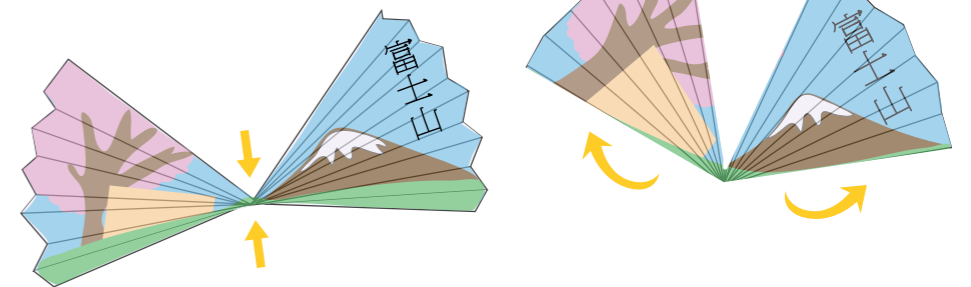
STEP 4

Holding the page lengthways, turn the paper over and fold up at the bottom by an inch, then turn it over to the front and make another fold. Keep going until you have a concertina effect.



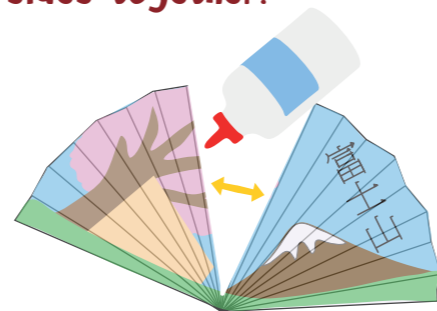
STEP 5

Pinch the middle of the card together, then fold upwards from the centre so that the two sides meet.



STEP 6

Glue the two separate sides together.



STEP 7

Pinch about an inch of the bottom of the fan and crease the paper here. Then wrap the string around it a few times over and tie in a knot to secure. Hold your fan here at the base, and wave!

